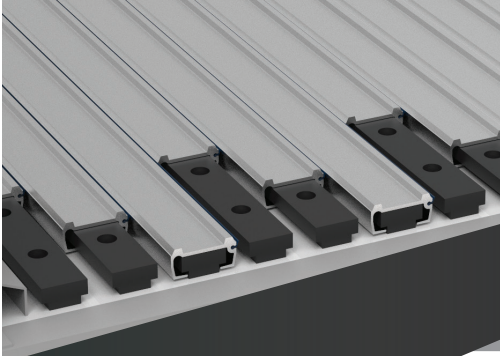




THE KEITH® F-Series European DRIVE



The KEITH® F-Series Drive is a lightweight, standard drive unit available in Europe.

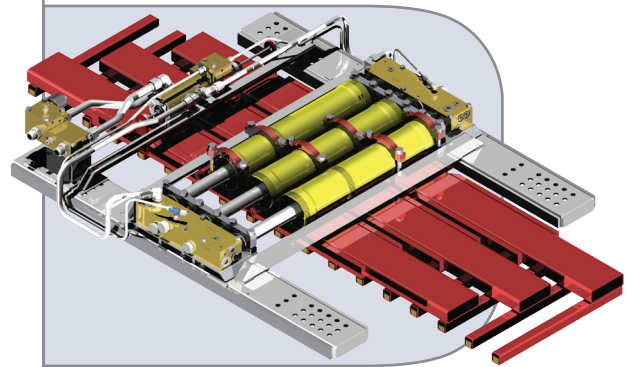
- Durable and dependable construction.
- Simple installation.
- Low maintenance.
- Compact and powerful design.
- Aluminum components are protected from corrosion.
- Interchangeable cylinders are easy to remove for service.
- Externally mounted valve assemblies are easy to access.
- Shorter drive unit, resulting in smaller installation window.

KEITH, the creator of WALKING FLOOR® technology, provides custom unloading systems for specialized applications worldwide.

KEITH MANUFACTURING CO

IDEAL FOR UNLOADING

- Refuse
- Recyclables
- Wood Products
- Grain
- Soil



The large cylinder barrel size and the shorter cylinder length reduce deflection from the unloading forces.



THE KEITH® F-Series European DRIVE

* Unload/Load times may vary with length of trailer, material type, or other environmental variables.

FEATURES

Compact Design for Easy Installation

- Small drive opening.
- Lightweight drive unit.
- Drive shoe designed for pre-drilling of floor slats.
- Shortest and lightest of any standard drive.

Interchangeable Components for Easy Replacement and Reconfiguration

- Standard manual on/off can easily be upgraded to optional electric for remote control.
- Manifolds are identical and interchangeable with only minor hydraulic fitting changes.
- Interchangeable components for easy maintenance and repair.
 - Check Valves
 - Cylinders
 - Manifolds

Standard Features

- Fully supported by trailer main frame beams.
- Durable construction is virtually maintenance free.
- Splash Guard Hold-Down bearing protects floor slat for longer life.
- Long cross-drive shoes provide structural support to floor slat.

KEITH
MANUFACTURING CO

KEITH Manufacturing Co.

WORLD HEADQUARTERS

Madras, OR USA

(541) 475-3802

sales@keithwalkingfloor.com

Canada

canadasales@keithwalkingfloor.com

México

kmc_mexico@keithwalkingfloor.com

Australia

ausales@keithwalkingfloor.com

Europe

eurosales@keithwalkingfloor.com

Hydraulic Drive Unit Specifications

Bore Size:	108 mm [4.25"]
Cylinder Stroke:	200 mm [8"]
Maximum Working Pressure:	210 bar [3000 PSI]
Maximum Pump Flow:	110 l/min [30 gallon/min]
Load Capacity:	Exceeds Legal Limit

Pump Flow gal/minute	Floor Speed ft/minute *
----------------------	-------------------------

114 l/min [30 g/min]	2.3 m/min [8.2 ft/min]
----------------------	------------------------

www.keithwalkingfloor.com