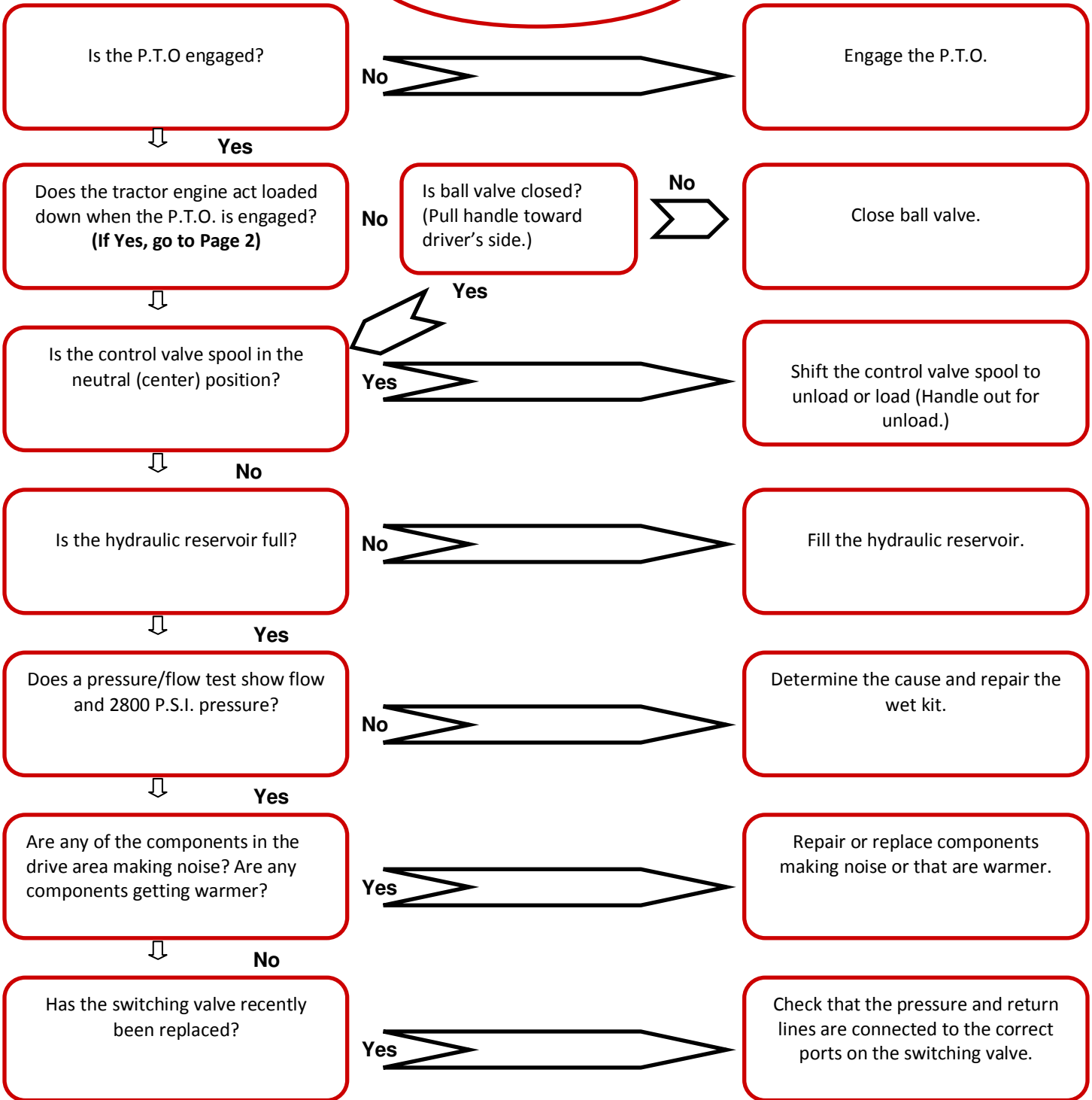


KEITH Running Floor II® Drive Trouble Shooting Flow Chart A; Page 1

Mechanically Actuated Switching Valve, Manual Ball Valve, Manual Control Valve

The *WALKING FLOOR*®
system will not start.



Contact KEITH Mfg. Co. at
800-547-6161 or
techdept@keithwalkingfloor.com

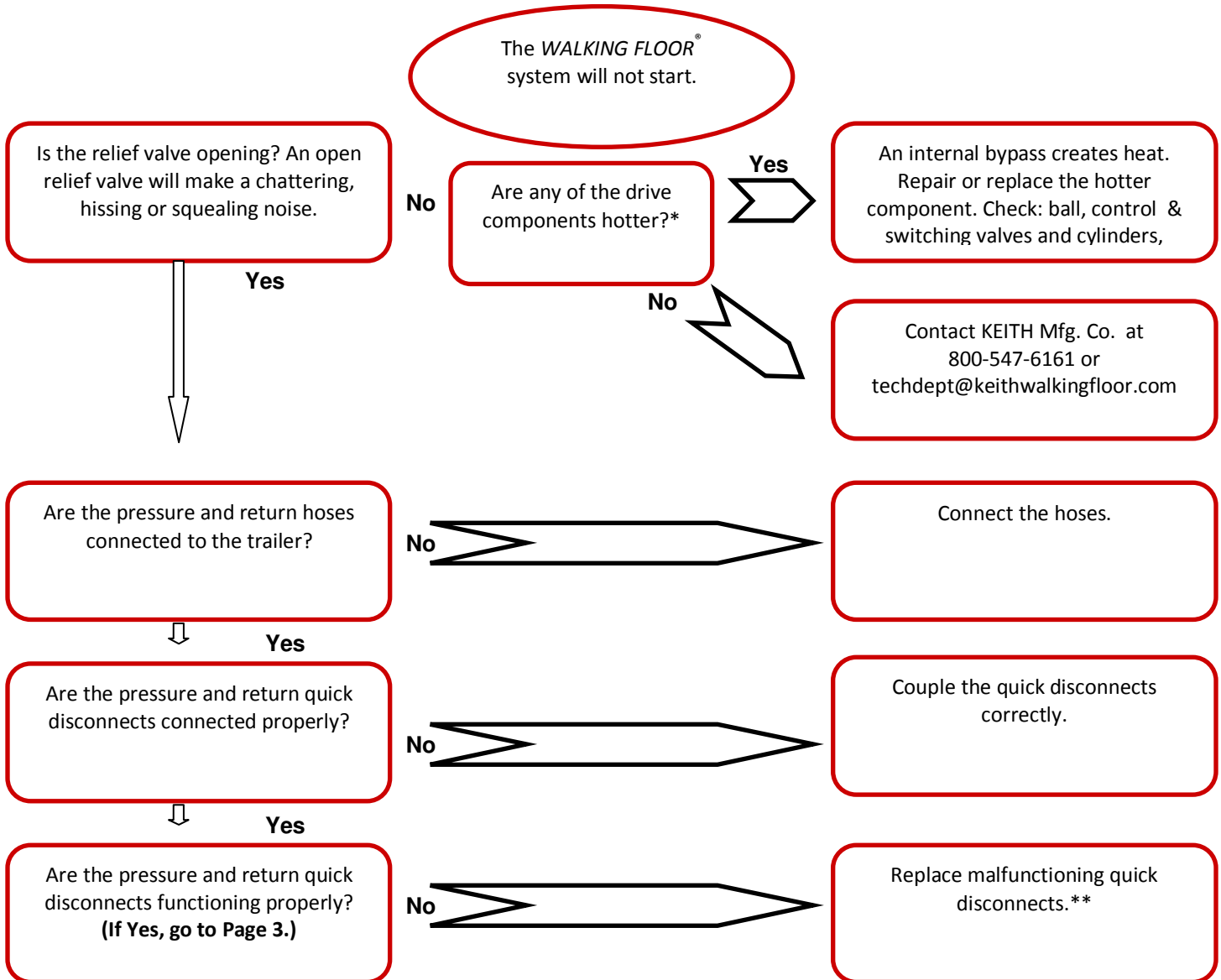
KEITH Mfg. Co.
P.O. Box 1
Madras, OR 97741
USA

800-547-6161
541-475-3802 (ph)
541-475-2169 (fax)

Visit www.keithwalkingfloor.com for international locations.

KEITH Running Floor II® Drive Trouble Shooting Flow Chart A; Page 2

Mechanically Actuated Switching Valve, Manual Ball Valve, Manual Control Valve



*Use an infrared thermometer to determine the hottest component.

**Coupled disconnects may not be open. Test: Couple the pressure and return hoses to the trailer. Open the ball valve at the drive area. The handle on the ball valve should be pushed inward to be open. Engage the P.T.O. The tractor engine should not be loaded down.

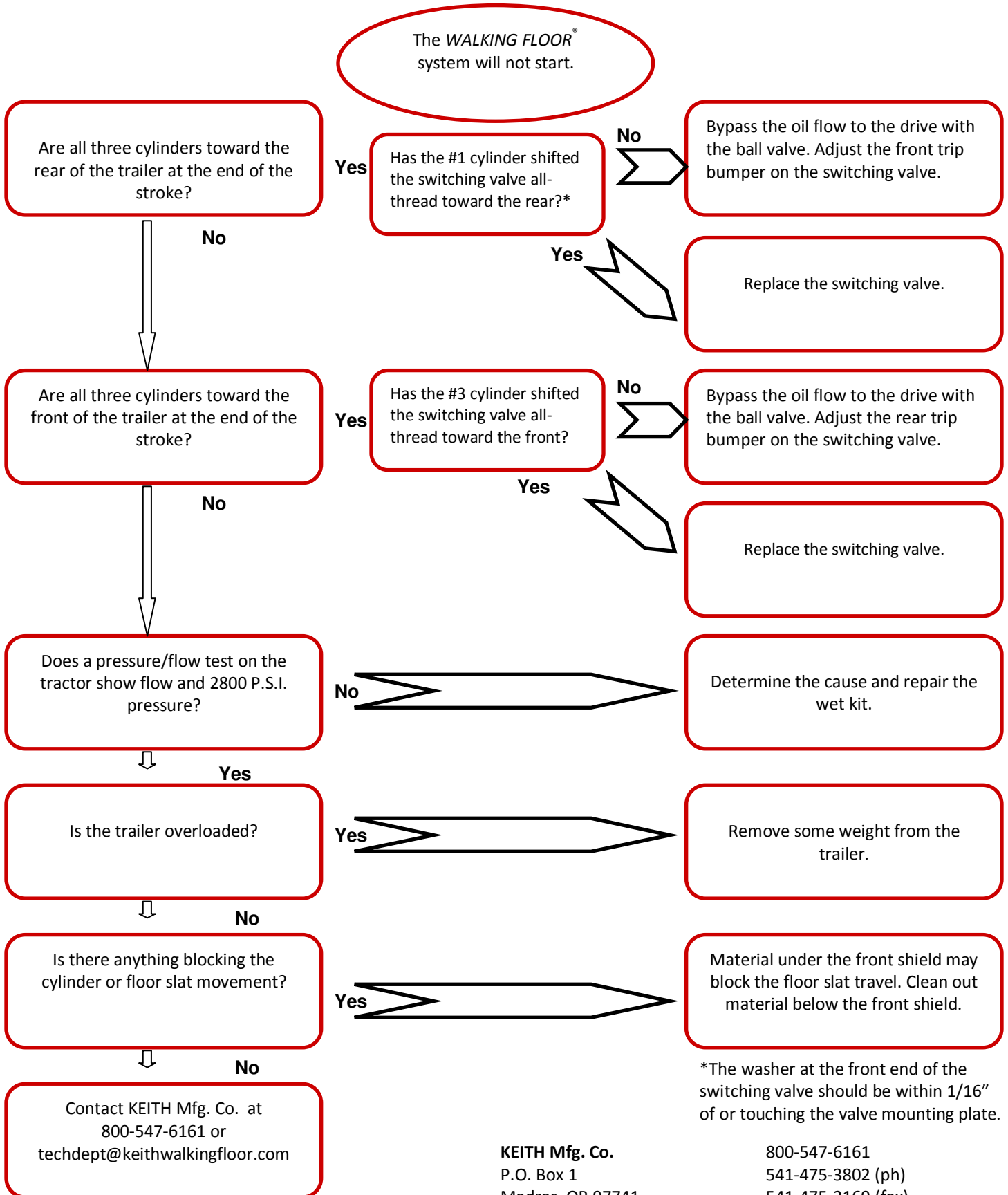
KEITH Mfg. Co.
P.O. Box 1
Madras, OR 97741
USA

800-547-6161
541-475-3802 (ph)
541-475-2169 (fax)

Visit www.keithwalkingfloor.com for international locations.

KEITH Running Floor II® Drive Trouble Shooting Flow Chart A; Page 3

Mechanically Actuated Switching Valve, Manual Ball Valve, Manual Control Valve



*The washer at the front end of the switching valve should be within 1/16" of or touching the valve mounting plate.

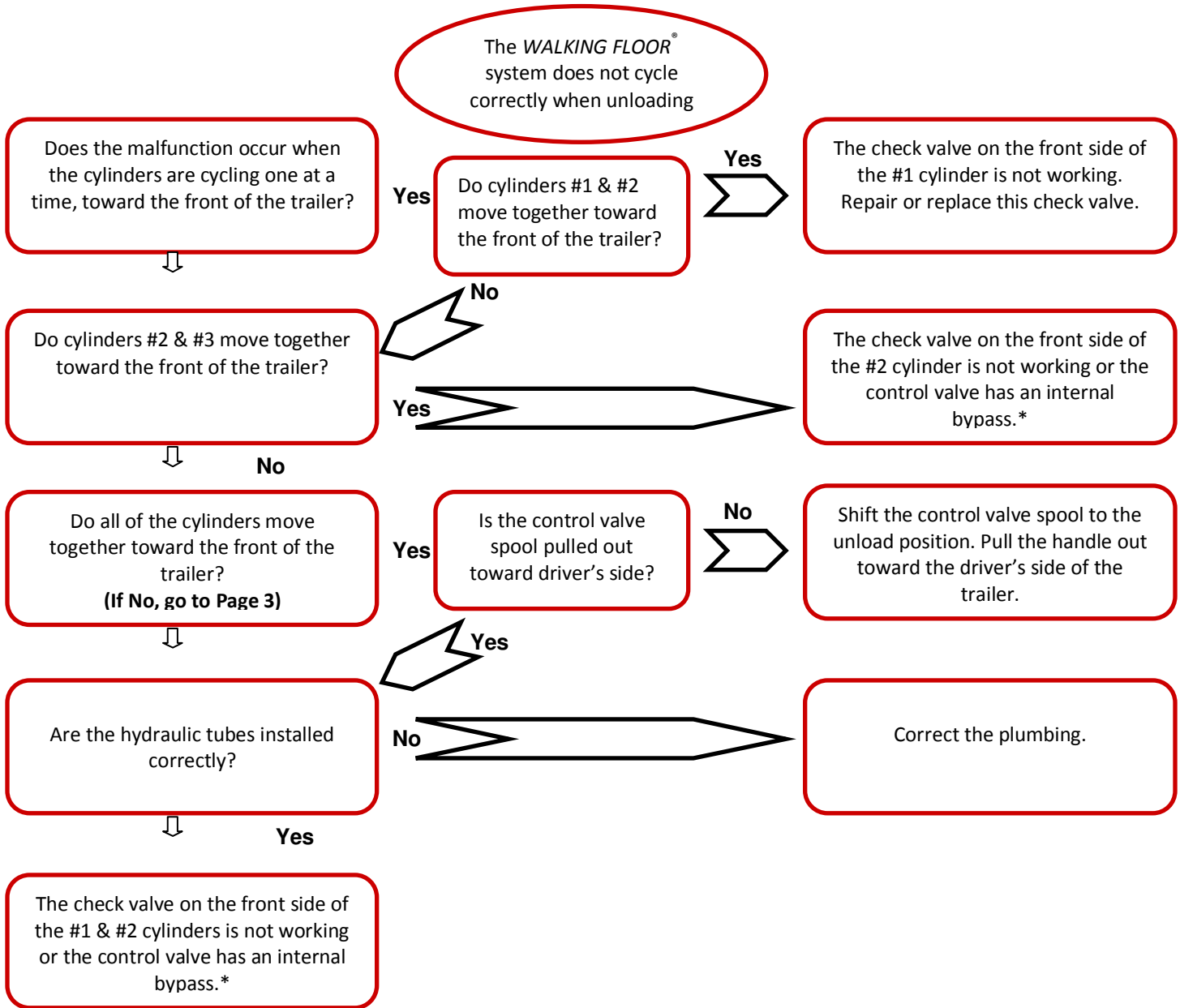
KEITH Mfg. Co.
P.O. Box 1
Madras, OR 97741
USA

800-547-6161
541-475-3802 (ph)
541-475-2169 (fax)

Visit www.keithwalkingfloor.com for international locations.

KEITH Running Floor II® Drive Trouble Shooting Flow Chart B; Page 1

Mechanically Actuated Switching Valve, Manual Ball Valve, Manual Control Valve



*If the system cycles correctly with the control valve removed, then it is the control valve causing the malfunction. Replace the control valve. If the system does not cycle correctly with the control valve removed, then it is the check valve(s) causing the malfunction. Replace the check valve(s)

KEITH Mfg. Co.
P.O. Box 1
Madras, OR 97741
USA

800-547-6161
541-475-3802 (ph)
541-475-2169 (fax)

Visit www.keithwalkingfloor.com for international locations.

KEITH Running Floor II® Drive Trouble Shooting Flow Chart B; Page 2

Mechanically Actuated Switching Valve, Manual Ball Valve, Manual Control Valve

The *WALKING FLOOR*®
system does not cycle
correctly when unloading

Does the malfunction occur when the cylinders are moving together, toward the rear of the trailer?

No

Contact KEITH Mfg. Co. at
800-547-6161 or
techdept@keithwalkingfloor.com

Yes

Do the cylinders stall at the end of the stroke toward the front?
(If No, go to Page 4)

Yes

Does the #3 cylinder actuate the switching valve all-thread?

No

Bypass the oil flow to the drive with the ball valve. Adjust the rear trip bumper on the switching valve.

Yes

Does the system stall after the #3 cylinder actuates the switching valve all-thread?

No

Contact KEITH Mfg. Co. at
800-547-6161 or
techdept@keithwalkingfloor.com

Yes

Does a pressure/flow test on the tractor show flow and 2800 P.S.I. pressure?

No

Determine the cause and repair the wet kit.

Yes

Is the trailer overloaded?

Yes

Remove some weight from the trailer.

No

Is the switching valve hotter than any of the other components on the drive?

Yes

The switching valve has an internal bypass. Replace the switching valve.

No

Are any of the components of the drive area hotter, compared to the other components?

Yes

An internal bypass creates heat. Repair or replace the hotter component.

No

Contact KEITH Mfg. Co. at
800-547-6161 or
techdept@keithwalkingfloor.com

KEITH Mfg. Co.
P.O. Box 1
Madras, OR 97741
USA

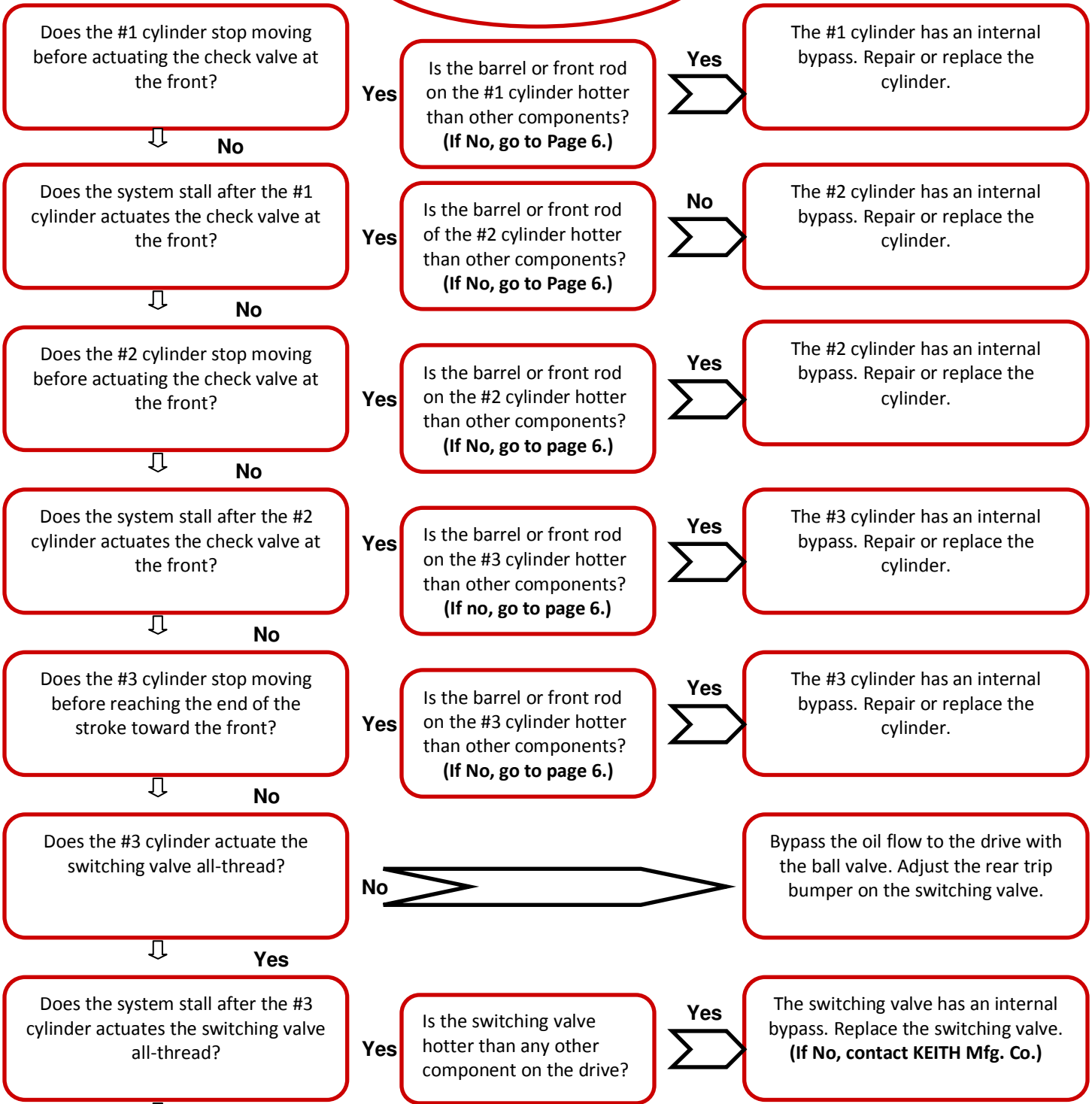
800-547-6161
541-475-3802 (ph)
541-475-2169 (fax)

Visit www.keithwalkingfloor.com for international locations.

KEITH Running Floor II® Drive Trouble Shooting Flow Chart B; Page 3

Mechanically Actuated Switching Valve, Manual Ball Valve, Manual Control Valve

The *WALKING FLOOR*® system does not cycle correctly when unloading



Contact KEITH Mfg. Co. at
800-547-6161 or
techdept@keithwalkingfloor.com

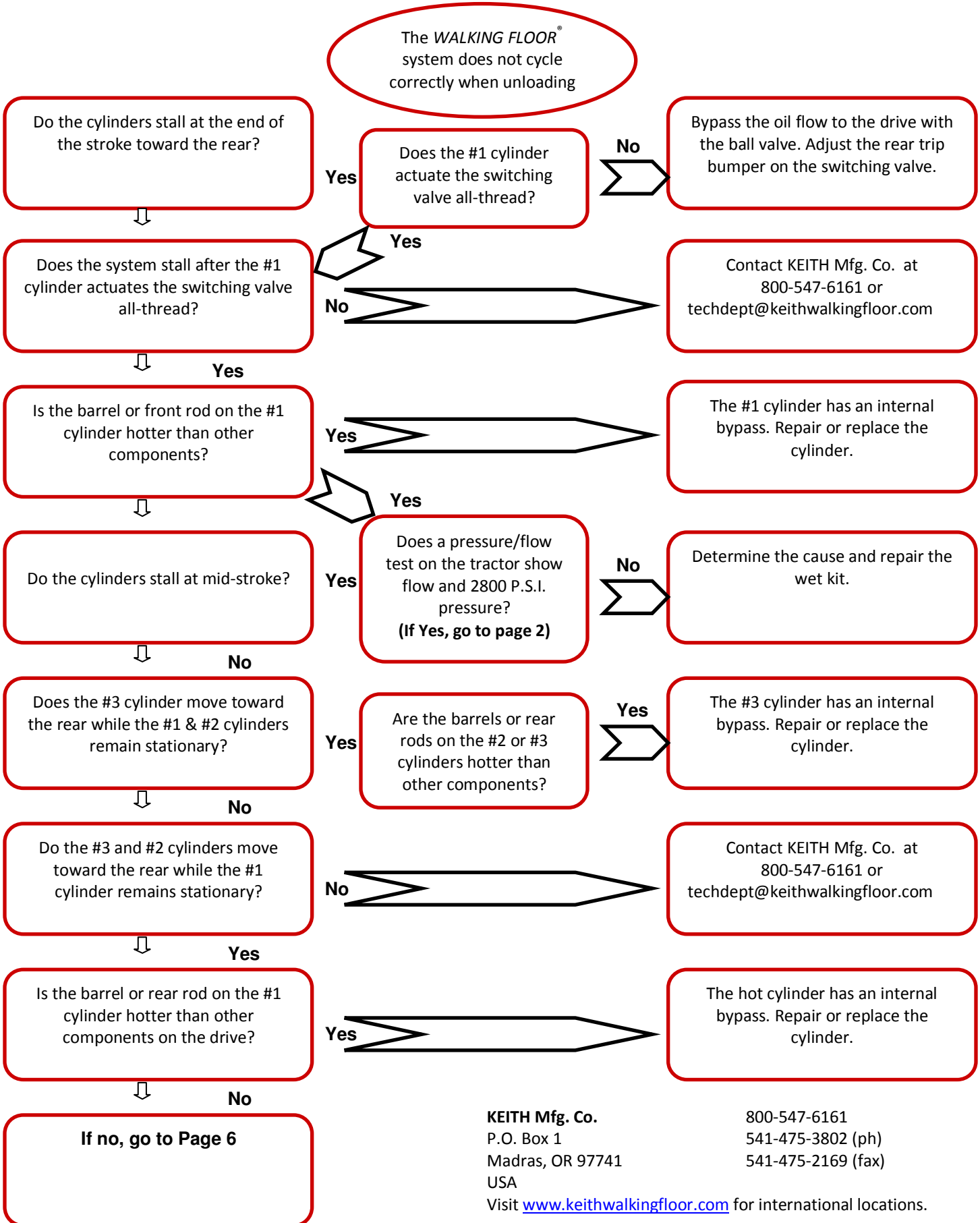
KEITH Mfg. Co.
P.O. Box 1
Madras, OR 97741
USA

800-547-6161
541-475-3802 (ph)
541-475-2169 (fax)

Visit www.keithwalkingfloor.com for international locations.

KEITH Running Floor II® Drive Trouble Shooting Flow Chart B; Page 4

Mechanically Actuated Switching Valve, Manual Ball Valve, Manual Control Valve



KEITH Running Floor II® Drive Trouble Shooting Flow Chart B; Page 5

Mechanically Actuated Switching Valve, Manual Ball Valve, Manual Control Valve

The *WALKING FLOOR*® system does not cycle correctly when unloading

Does a pressure/flow test on the tractor show flow and 2800 P.S.I. pressure?



Yes

No



Determine the cause and repair the wet kit.

Is the trailer overloaded?



No

Yes



Remove some weight from the trailer.

Is there anything blocking the cylinder or floor slat movement?

No

Yes



Cleanout material below the front shield.

Are any of the components at the drive area hotter compared to other components?



No

Yes



An internal bypass creates heat. Repair or replace the hotter component.*

Contact KEITH Mfg. Co. at
800-547-6161 or
techdept@keithwalkingfloor.com

*Check the ball valve, control valve, switching valve and hydraulic cylinders.

KEITH Mfg. Co.
P.O. Box 1
Madras, OR 97741
USA

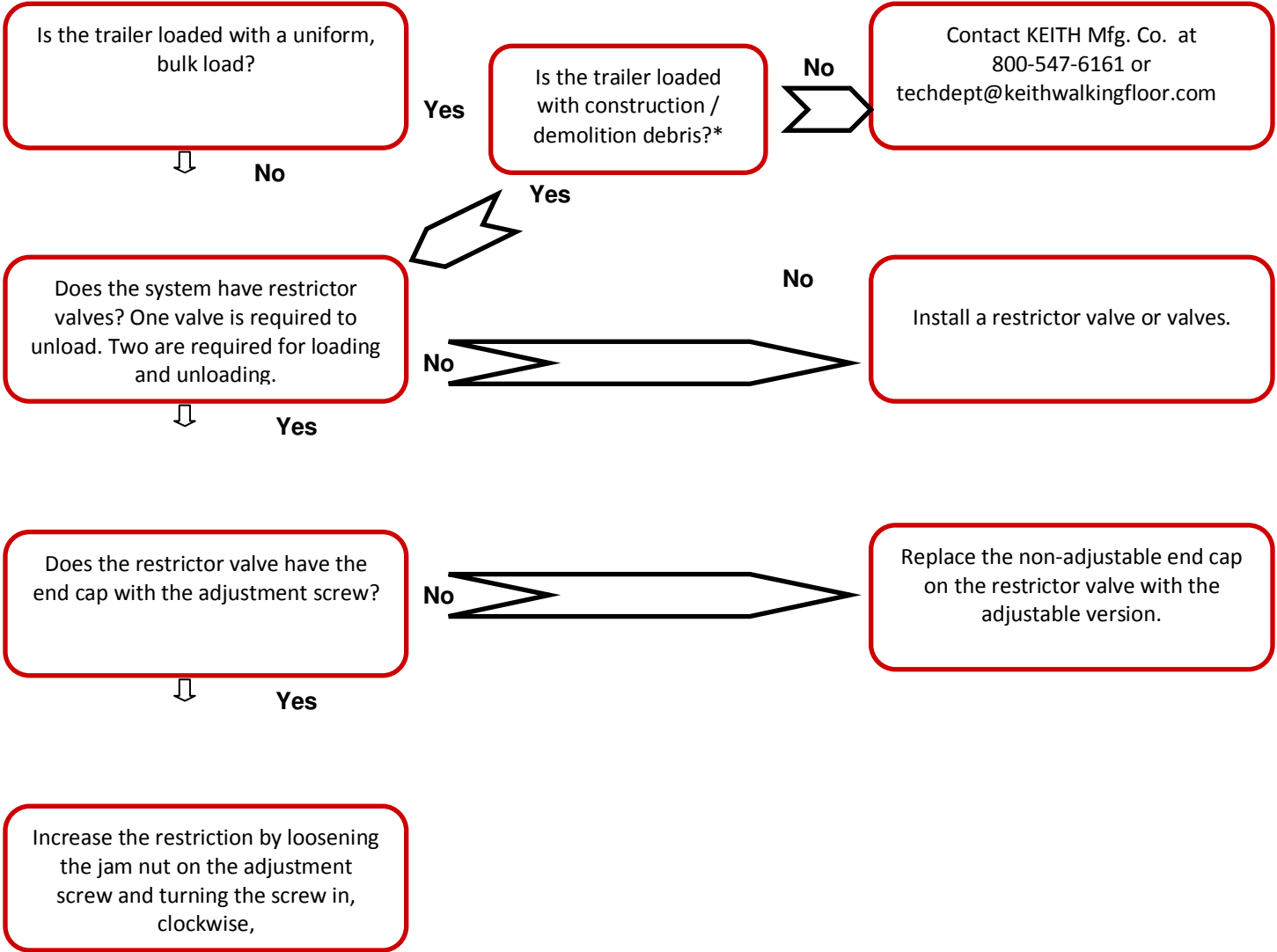
800-547-6161
541-475-3802 (ph)
541-475-2169 (fax)

Visit www.keithwalkingfloor.com for international locations.

KEITH Running Floor II® Drive Trouble Shooting Flow Chart B; Page 6

Mechanically Actuated Switching Valve, Manual Ball Valve, Manual Control Valve

The *WALKING FLOOR*® system does not cycle correctly when unloading.

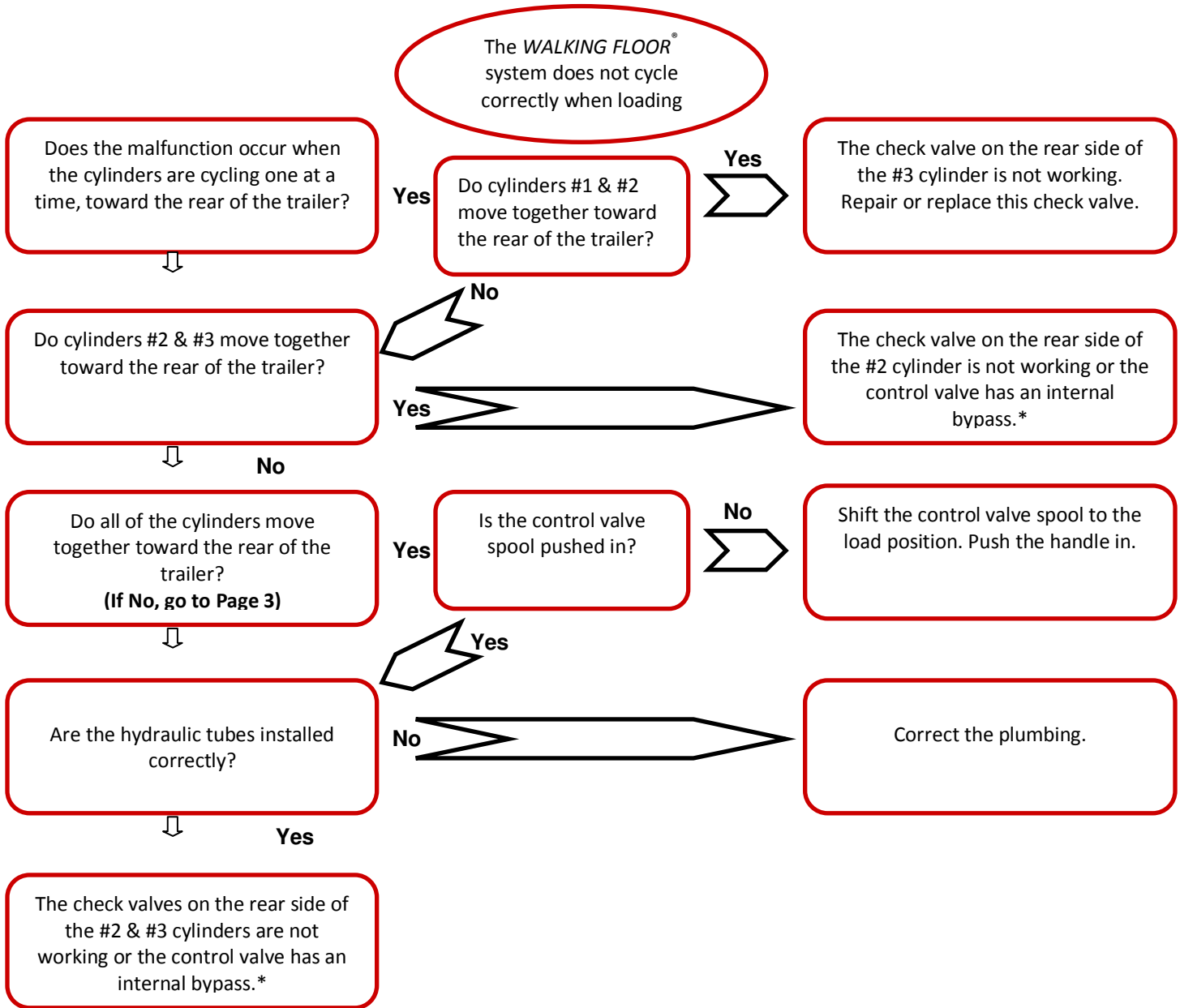


*Construction/Demolition debris loading tips: Load the bottom of the trailer with fines or material that will conform. Place boards and beams on a diagonal. The diagonal loading will distribute forces more evenly. Concentrated loads on one floor slat will cause the problem of not moving together to the rear.

KEITH Mfg. Co.
P.O. Box 1
Madras, OR 97741
USA
800-547-6161
541-475-3802 (ph)
541-475-2169 (fax)
Visit www.keithwalkingfloor.com for international locations.

KEITH Running Floor II® Drive Trouble Shooting Flow Chart C; Page 1

Mechanically Actuated Switching Valve, Manual Ball Valve, Manual Control Valve



*If the system cycles correctly with the control valve removed, then it is the control valve causing the malfunction. Replace the control valve. If the system does not cycle correctly with the control valve removed, then it is the check valve(s) causing the malfunction. Replace the check valve(s)

KEITH Mfg. Co.
P.O. Box 1
Madras, OR 97741
USA

800-547-6161
541-475-3802 (ph)
541-475-2169 (fax)

Visit www.keithwalkingfloor.com for international locations.

KEITH Running Floor II® Drive Trouble Shooting Flow Chart C; Page 2

Mechanically Actuated Switching Valve, Manual Ball Valve, Manual Control Valve

The *WALKING FLOOR*®
system does not cycle
correctly when loading

Does the malfunction occur when the cylinders are moving together, toward the front of the trailer?

No

Contact KEITH Mfg. Co. at
800-547-6161 or
techdept@keithwalkingfloor.com

Yes

Do the cylinders stall at the end of the stroke toward the front?
(If No, go to Page 4)

Yes

Does the #3 cylinder actuate the switching valve all-thread?

No

Bypass the oil flow to the drive with the ball valve. Adjust the rear trip bumper on the switching valve.

Yes

Does the system stall after the #3 cylinder actuates the switching valve all-thread?

No

Contact KEITH Mfg. Co. at
800-547-6161 or
techdept@keithwalkingfloor.com

Yes

Does a pressure/flow test on the tractor show flow and 2800 P.S.I. pressure?

No

Determine the cause and repair the wet kit.

Yes

Is the trailer overloaded?

Yes

Remove some weight from the trailer.

No

Is the switching valve hotter than any of the other components on the drive?

Yes

The switching valve has an internal bypass. Replace the switching valve.

No

Are any of the components of the drive area hotter, compared to the other components?

Yes

An internal bypass creates heat. Repair or replace the hotter component.

No

Contact KEITH Mfg. Co. at
800-547-6161 or
techdept@keithwalkingfloor.com

KEITH Mfg. Co.
P.O. Box 1
Madras, OR 97741
USA

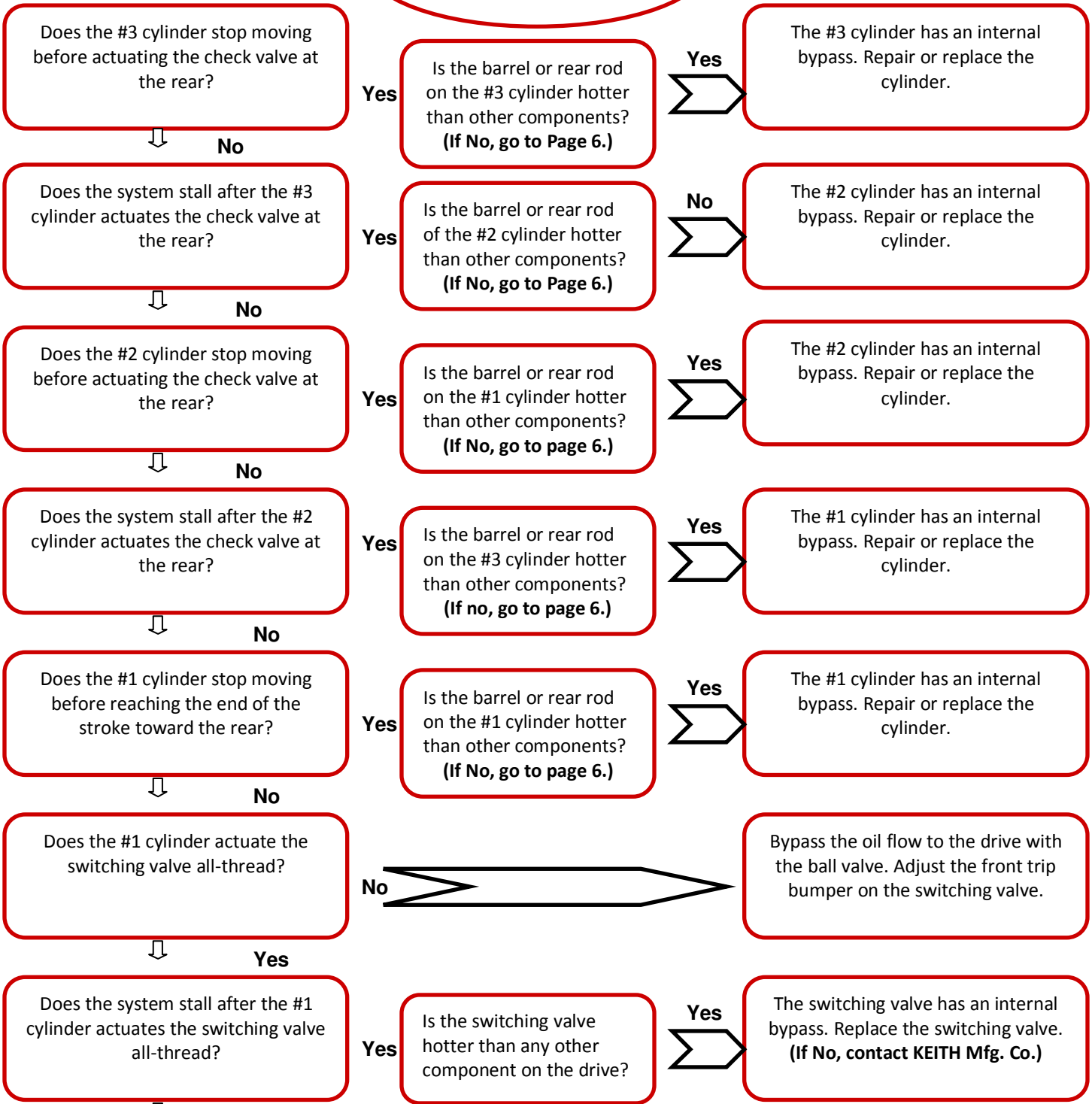
800-547-6161
541-475-3802 (ph)
541-475-2169 (fax)

Visit www.keithwalkingfloor.com for international locations.

KEITH Running Floor II® Drive Trouble Shooting Flow Chart C; Page 3

Mechanically Actuated Switching Valve, Manual Ball Valve, Manual Control Valve

The *WALKING FLOOR*® system does not cycle correctly when loading



Contact KEITH Mfg. Co. at
800-547-6161 or
techdept@keithwalkingfloor.com

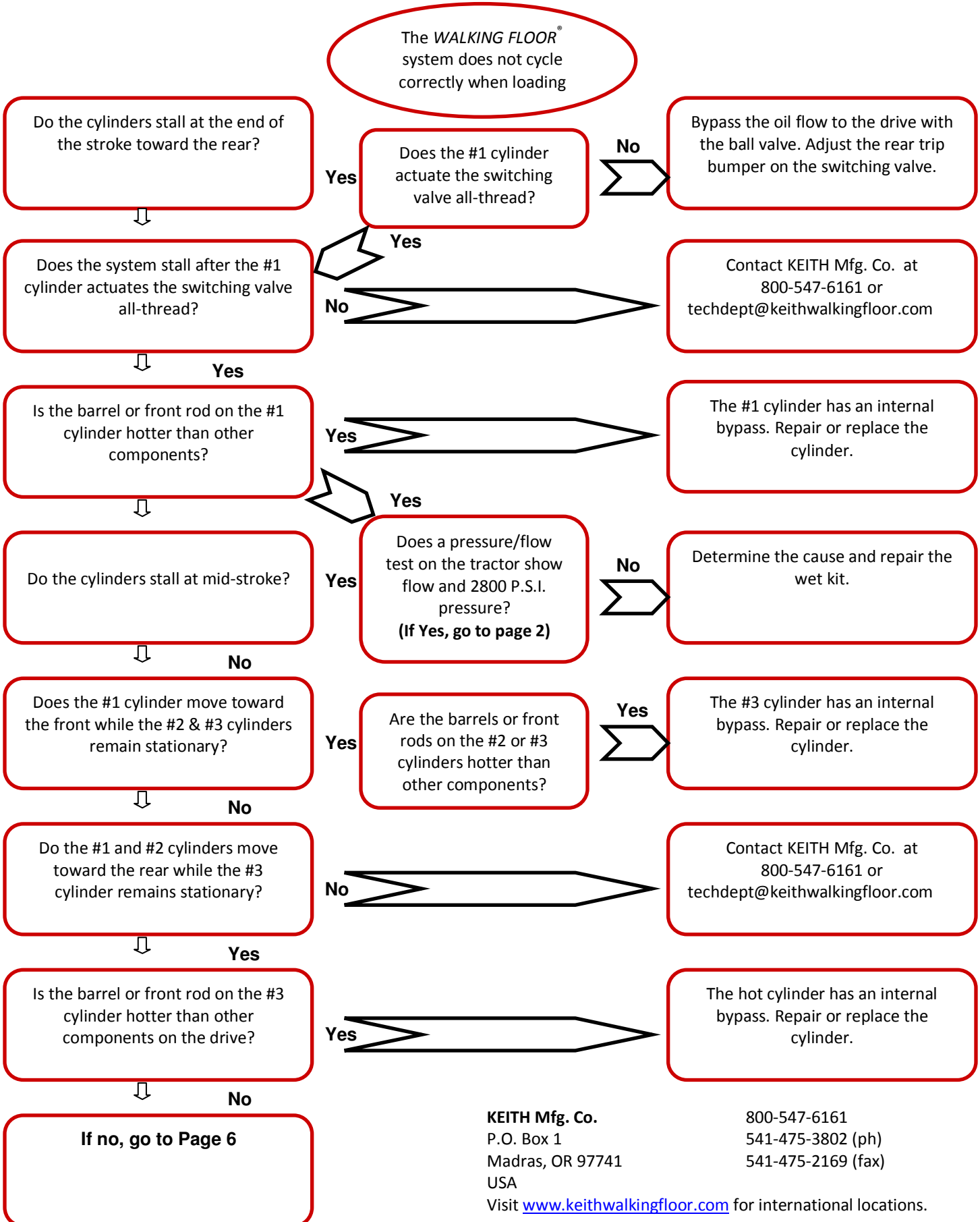
KEITH Mfg. Co.
P.O. Box 1
Madras, OR 97741
USA

800-547-6161
541-475-3802 (ph)
541-475-2169 (fax)

Visit www.keithwalkingfloor.com for international locations.

KEITH Running Floor II® Drive Trouble Shooting Flow Chart C; Page 4

Mechanically Actuated Switching Valve, Manual Ball Valve, Manual Control Valve



KEITH Mfg. Co.
 P.O. Box 1
 Madras, OR 97741
 USA
 Visit www.keithwalkingfloor.com for international locations.

800-547-6161
 541-475-3802 (ph)
 541-475-2169 (fax)

KEITH Running Floor II® Drive Trouble Shooting Flow Chart C; Page 5

Mechanically Actuated Switching Valve, Manual Ball Valve, Manual Control Valve

The *WALKING FLOOR*® system does not cycle correctly when loading

Does a pressure/flow test on the tractor show flow and 2800 P.S.I. pressure?



Yes

No



Determine the cause and repair the wet kit.

Is the trailer overloaded?



No

Yes



Remove some weight from the trailer.

Is there anything blocking the cylinder or floor slat movement?

No

Yes



Cleanout material below the front shield.

Are any of the components at the drive area hotter compared to other components?



No

Yes



An internal bypass creates heat. Repair or replace the hotter component.*

Contact KEITH Mfg. Co. at
800-547-6161 or
techdept@keithwalkingfloor.com

*Check the ball valve, control valve, switching valve and hydraulic cylinders.

KEITH Mfg. Co.
P.O. Box 1
Madras, OR 97741
USA

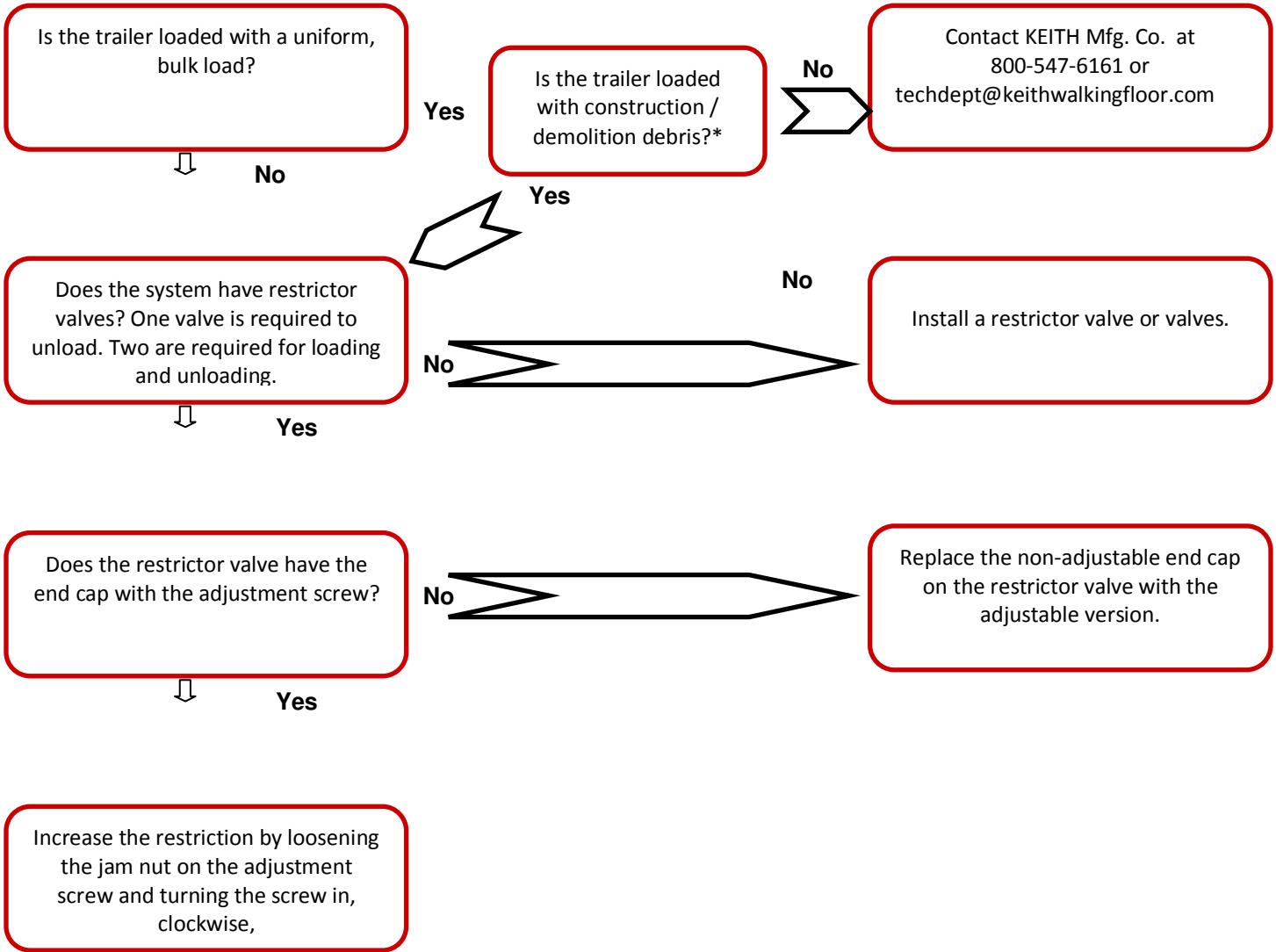
800-547-6161
541-475-3802 (ph)
541-475-2169 (fax)

Visit www.keithwalkingfloor.com for international locations.

KEITH Running Floor II® Drive Trouble Shooting Flow Chart C; Page 6

Mechanically Actuated Switching Valve, Manual Ball Valve, Manual Control Valve

The *WALKING FLOOR*® system does not cycle correctly when loading.



*Construction/Demolition debris loading tips: Load the bottom of the trailer with fines or material that will conform. Place boards and beams on a diagonal. The diagonal loading will distribute forces more evenly. Concentrated loads on one floor slat will cause the problem of not moving together to the rear.

KEITH Mfg. Co.
P.O. Box 1
Madras, OR 97741
USA
800-547-6161
541-475-3802 (ph)
541-475-2169 (fax)
Visit www.keithwalkingfloor.com for international locations.